



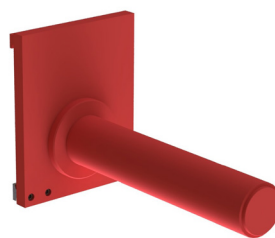
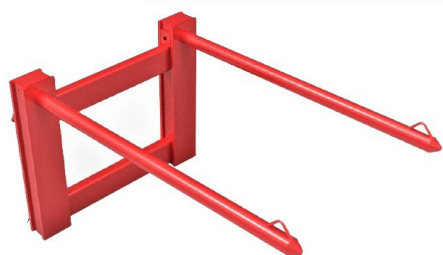
Cebriá

FORKLIFT ATTACHMENTS

Espolón

Coil Boom

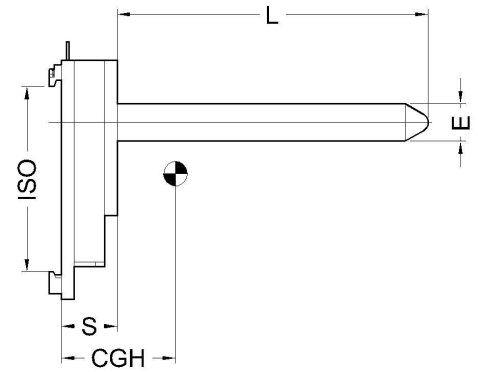
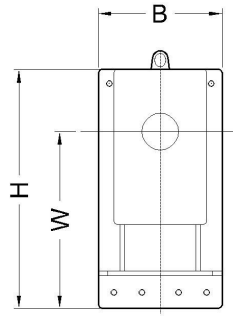
Éperon



Espolón

Coil Boom

Éperon



ESPECIFICACIONES TÉCNICAS

TECHNICAL SPECIFICATIONS / CARACTERISTIQUES TECHNIQUES

MOD.	E mm	B mm	H mm	W mm	L mm	CGH mm	S mm	P Kg	ISO
ES045E100C	45	320	500	100	1000	141	90	60	2
ES050E100C	50	320	500	100	1000	171	90	64	2
ES055E100C	55	320	500	100	1000	180	90	68	2
ES060E100C	60	320	500	100	1000	198	90	72	2
ES065E100E	65	350	630	150	1000	190	120	109	3
ES070E100E	70	350	630	150	1000	206	120	114	3
ES075E100E	75	350	630	150	1000	221	120	119	3
ES080E100E	80	350	630	150	1000	236	120	124	3
ES085E100E	85	350	630	175	1000	238	150	169	3
ES090E100E	90	350	630	175	1000	246	150	176	3
ES095E100E	95	350	630	175	1000	257	150	183	3
ES100E100E	100	350	630	175	1000	263	150	190	3
ES110E100G	110	400	750	200	1000	272	180	250	4
ES120E100G	120	400	750	200	1000	285	180	270	4
ES130E100G	130	400	750	200	1000	297	200	290	4
ES140E100G	140	400	750	200	1000	303	200	310	4

MOD.	E mm	500	1000	1250	1500	1750	2000	2500
ES045E100C	45	430	215	170	145	125	110	85
ES050E100C	50	650	325	260	215	185	160	130
ES055E100C	55	900	450	360	300	255	225	180
ES060E100C	60	1200	600	480	400	340	300	240
ES065E100E	65	1500	750	600	500	430	375	300
ES070E100E	70	2000	1000	800	665	570	500	400
ES075E100E	75	2450	1225	980	815	700	610	490
ES080E100E	80	3000	1500	1200	1000	855	750	600
ES085E100E	85	3600	1800	1440	1200	1025	900	720
ES090E100C	90	2450	1225	980	815	700	610	490
ES090E100E	90	4000	2000	1600	1330	1140	1000	800
ES095E100E	95	4750	2375	1900	1580	1355	1185	950
ES100E100E	100	5500	2750	2200	1830	1570	1375	1100
ES110E100G	110	7000	3500	28000	2330	2000	1750	1400
ES120E100G	120	9000	4500	3600	3000	2570	2250	1800
ES130E100G	130	10100	5050	4040	3370	2885	2525	2020
ES140E100G	140	12400	6200	5190	4520	3980	3380	2800

Notas

Capacidad de carga en Kg, según los centros de carga indicados.
P y CGH para L=1000mm.

Notes

Load capacity (kg) according to the load centres indicated.
P and CGH for L=1000mm.

Notes

Capacité de charge en kg selon les centres de charge indiqués.
P et CGH pour L=1000mm.